

Installation Instructions

Dominator 3 Side Steps Part # D36090 B-PS

2014-2017 Chevrolet Silverado 1500 Crew Cab

Do not attempt to install this product on any vehicle other than the one listed above!

Parts List

Item	Qty.	Part #	Description	Torque
1	3	C0751	Driver Side Bracket	
2	3	C0752	Passenger Side Bracket	
3	12	12	M8-1.25 x 25mm Hex Bolt	15 Ft. Lbs.
4	4	4	M8-1.25 Hex Nut	
5	4	4	M8-1.25 U-Nut	
6	16	16	5/16" Flat Washer	
7	12	12	5/16" Lock Washer	
8	12	12	3/8"-16 x 1-1/4" Hex Bolt	30 Ft. Lbs.
9	12	12	3/8" Hex Nut	
10	24	24	3/8" Flat Washer	
11	12	12	3/8" Lock Washer	
12	1	388FD	Driver Side Step Front Section	
13	1	390RD	Driver Side Step Rear Section	
14	1	388FP	Passenger Side Step Front Section	
15	1	390RP	Passenger Side Step rear Section	
16	1	KTE-G6000MK / Modular Assembly Kit		

#1
Driver Side



#2
Passenger Side



Tool Required:

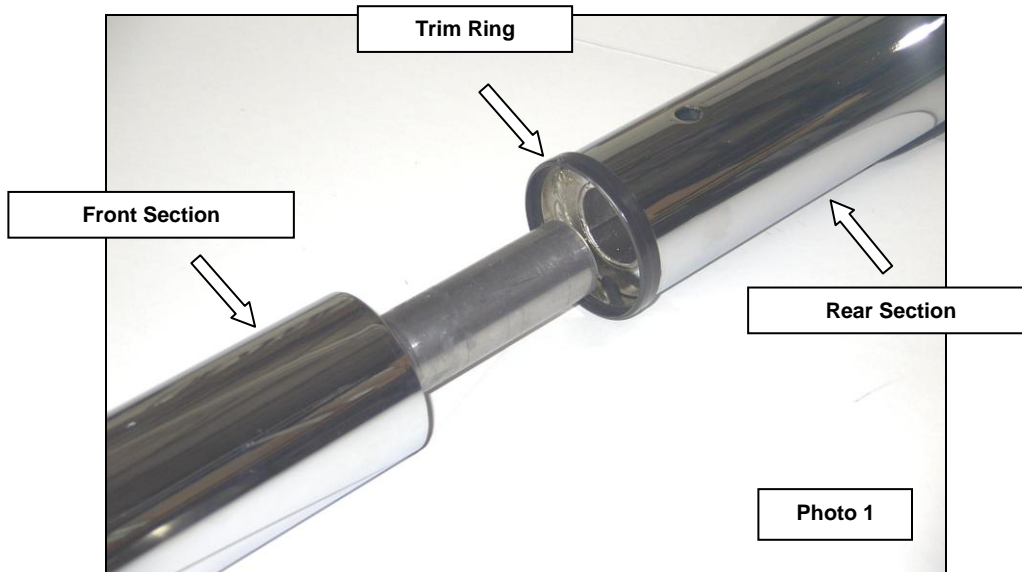
- 13mm & 9/16" Socket
- 13mm & 9/16" Wrench
- 3/16" Hex Key
- Ratchet & Ratchet Extension
- Tape Rule

Approximate installation time: 60 min

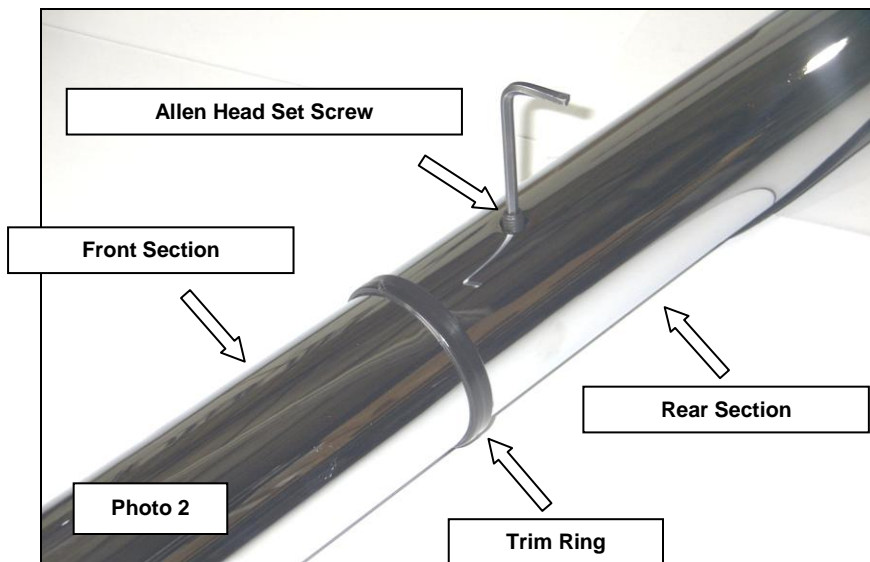
Read the assembly and installation instructions completely and verify that all of the parts listed are accounted for. If you have defective, missing or damaged parts or need assistance, please contact **Go Rhino Products** for fast, friendly customer service at: 1-888-427-4466 or email: warranty@gorhino.com

Side Step Assembly

Step-1 Lay out the front and rear side step sections on a protective surface with the step pads down and install the plastic trim ring (lip over the edge) of the rear section, (Photo 1).



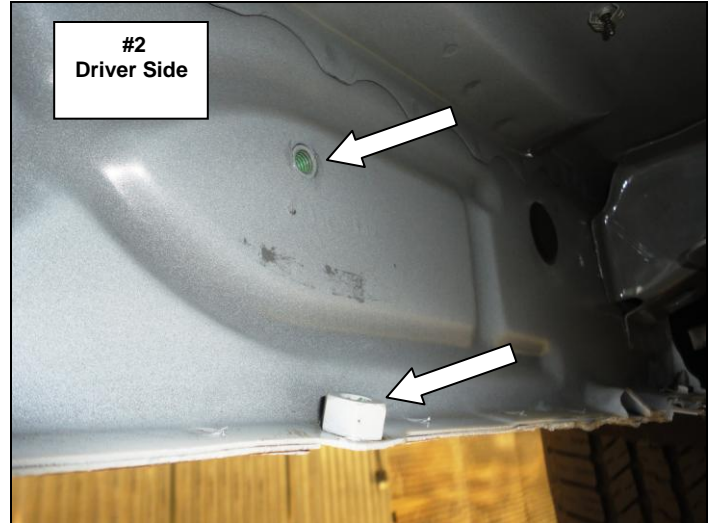
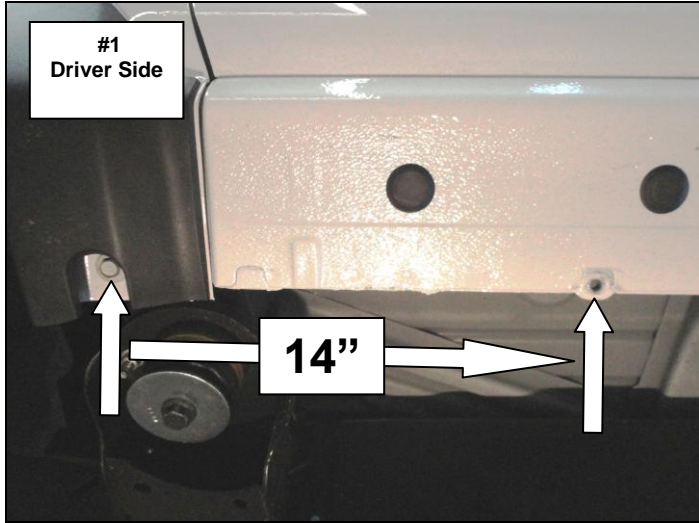
Step-2 Insert the male end of the side step front section into the female end of the side step rear section, and position the front side step section snug against the trim ring (lip over the edge). Align the front and rear side step sections, and secure the assembly using (1) 3/8" Allen head set screw, (Photo 2).



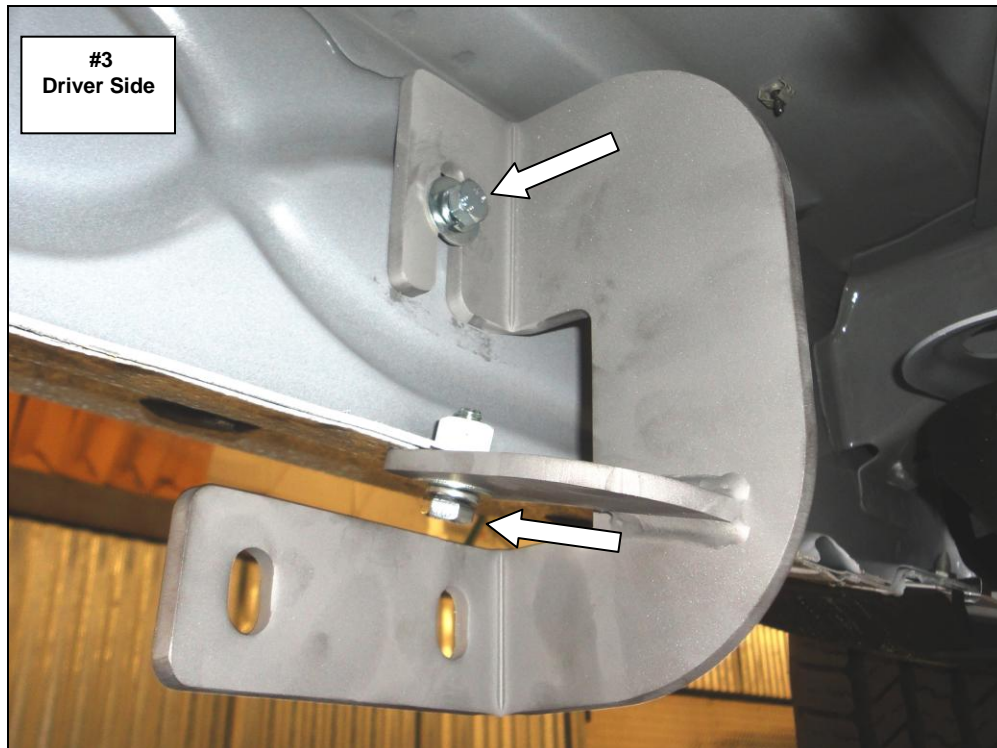
Step-3 Install the plastic plug in the set screw access hole to conceal the set screw.

Installation

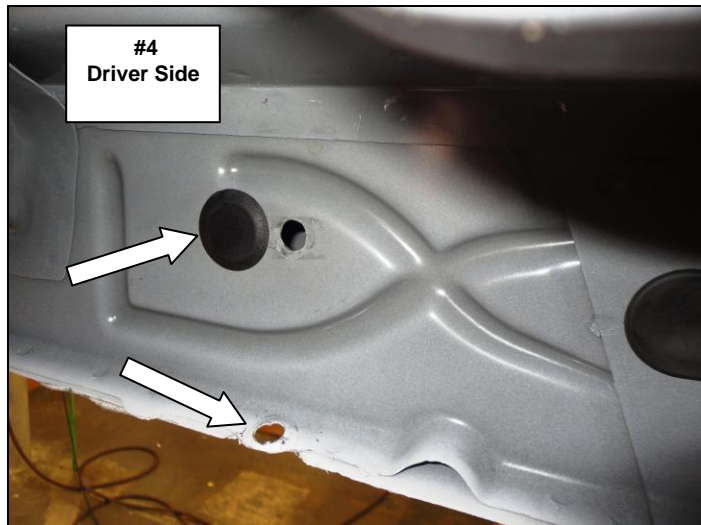
Step-1 This installation uses three brackets per side. Begin by installing the driver side front bracket. Measure from the front fender bolt rearward approximately 14", (**Photo 1**) and locate the M8 nut welded to the body pinch mold and the M8 threaded insert in the rocker panel, (**Photo 2**).



Step-2 Attach one of the driver side brackets to the rocker panel and pinch mold using (2) M8 hex bolts, (2) 5/16" lock washers and (2) 5/16" flat washers. Leave the bolts loose for final adjustment, (**Photo 3**).



Step-3 Install the driver side center bracket by measuring from the front fender bolt reward approximately 58 7/8" and locate the hole in the body pinch mold and the plastic plug in the rocker panel, **(Photo 4)**. Remove the plastic plug from the rocker panel and install (1) M8 U-Nut in the rocker panel, **(Photo 5)**.

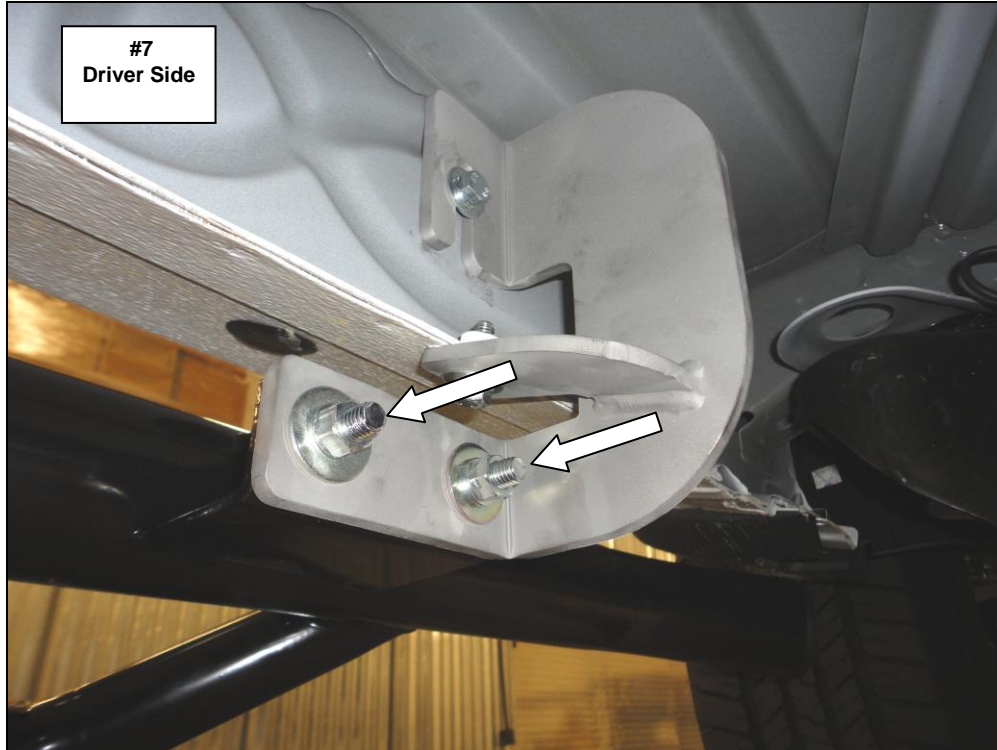


Step-4 Attach one of the driver side brackets to the rocker panel using the U-Nut, (1) M8 hex bolt, (1) 5/16" lock washer and (1) 5/16" flat washer, and to the pinch mold using (1) M8 hex bolt, (2) 5/16" flat washers, (1) 5/16" lock washer, and (1) M8 hex nut. Leave the nut and bolts loose for final adjustment, **(Photo 6)**.



Step-5 Install the driver side rear bracket by measuring from the front fender bolt reward approximately 75 1/8" and repeat the above steps.

Step-6 Attach the driver side step to each bracket using (2) 3/8" x 1 1/4" hex bolts, (4) 3/8" flat washers, (2) 3/8" lock washers and (2) 3/8" hex nuts, **(Photo 7)**.



Step -7 Align the side step with the vehicle and tighten all bracket and side step nuts and bolts. Repeat the above steps to install the driver side brackets and side step. Remember to check and retighten the nuts and bolts every six months.

