

F-150 SPEC FRONT BUMPER

21-23 FORD F-150

FBFF1-11



TOOLS REQUIRED

- 8, 10, 13, 17, 18, 19, 21, 22mm sockets
- #4, 5, 6, 8 Allen head sockets/tools
- T20, T30 Torx Tool
- Trim clip tool
- Sawzall/Grinder
- Razor/Snips
- Zip Ties
- Marker

SKILL LEVEL

- Intermediate
 - 1 (you) to 2 persons
- Moderate skill level required, you can easily install it by yourself however, additional help will be useful

TIME REQUIRED

- 3.5 Hours
- Time to install this should take about three and a half hours

WARNINGS/CAUTIONS BEFORE STARTING INSTALLATION

Before you install this kit – Read and understand all instructions, warnings, cautions, and notes contained in this installation instruction guide. Consult your vehicle owner’s manual for proper disconnection of electrical and lifting of vehicle if required for installation of this product.

This install may require some technical skills and knowledge of basic mechanical work. If you do not feel that you are capable of performing this install please take this product to a trained professional.

After reading this guide please contact us with any questions or concerns before installing product.
Customer Service: 855-680-9595

DV8 Offroad is not responsible for any bodily injury or harm to you or your vehicle as a result of an improper install.

Proper installation of this kit required knowledge of the factory recommended procedures for removal and installation of original equipment components. We recommend that the factory shop manual and any special tools needed to service your vehicle be on hand during the installation. Installation of this kit without proper knowledge of the factory recommended procedures may affect the performance of these components and the safety of the vehicle

- Always wear eye protection when operating power tools

Inspect all contents of this package to make sure product is not damaged and all installation hardware has been included. If parts are missing from kit, please be prepared to provide the following information

1. Name of purchase location
2. Bar Code on side of box
3. Date above bar code
4. Date inside box cover



INSTALLATION MANUAL

Begin by unpacking all items and inspecting for missing pieces or damage. If you have any concerns, please contact the company the product was purchased from. Extra hardware may be included with the product.

HARDWARE INCLUDED

- | | |
|------------------------|-------------------------------|
| (10) M14x35mm bolts | (6) M10x30mm Allen head bolts |
| (10) M14 Lock nuts | (2) M10 Lock nuts |
| (20) M14 Washers | (8) M10 Washers |
| (4) M12x30mm bolts | (1) M6x60 Allen head bolt |
| (2) M12 Lock nuts | (11) M6x20 Allen head bolt |
| (4) M12 Lock washers | (12) M6 Lock nuts |
| (8) M12 Larger washers | (24) M6 Washers |
| (4) M12 Nut Clips | |



STEP 1 | Begin by unplugging the bumper from the main wire harness on the truck. The plug can be found located on top of the frame rail under the passenger side headlight.

Note: If you have trouble removing this plug, you can wait until the bumper has been unbolted, however this will require additional help to hold the bumper and remove the plug.



STEP 2 | To remove the bumper, use a 21mm socket to remove the (3) mounting nuts per side.

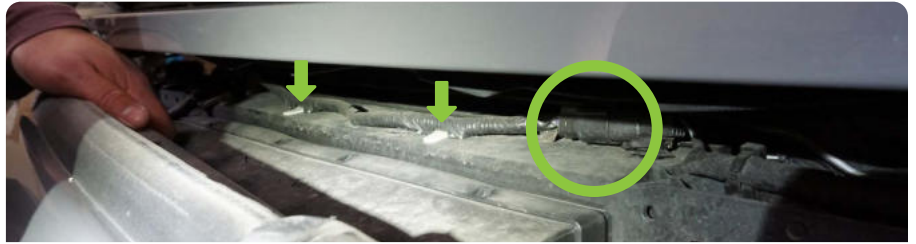


INSTALLATION MANUAL

STEP 3 | Once the nuts are removed, pull the bumper off by leaning the center back towards the vehicle and then pulling the bumper forward.



STEP 4 | Disconnect the lower shutter motor and the electrical plug on top of the lower shutter assembly. Use a trim clip tool to remove any harness clips.



STEP 5 | Using a 8mm socket, remove the (4) bolts that secure the lower shutter system.

Use a trim clip tool to remove any harness retaining clips.

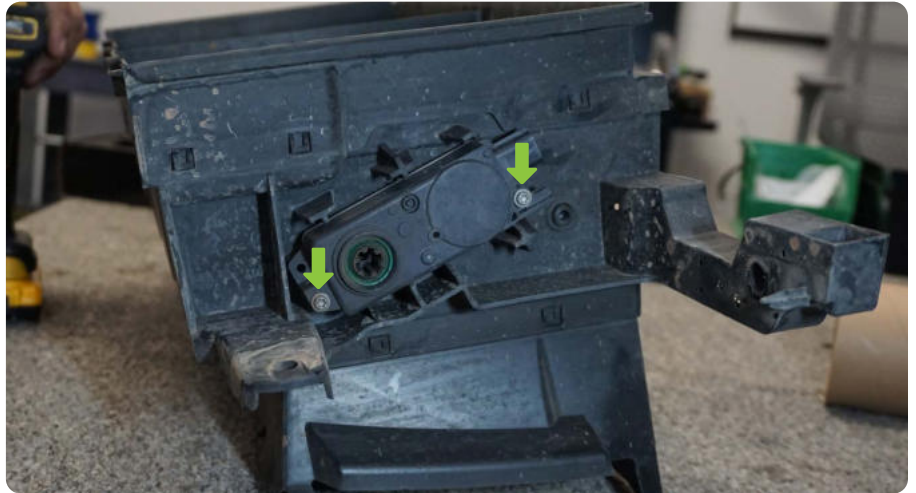
Set the lower shutter system on a work bench.



INSTALLATION MANUAL



STEP 6 | Use a T20 Torx tool to remove the lower shutter motor and set it off to the side to be reinstalled onto the DV8 Spec Series front bumper.



INSTALLATION MANUAL

STEP 7 | Once the bumper is removed, set off to the side and using a grinder/sawzall, safely cut off the crash bars. Ensure to paint any raw metal after cutting.

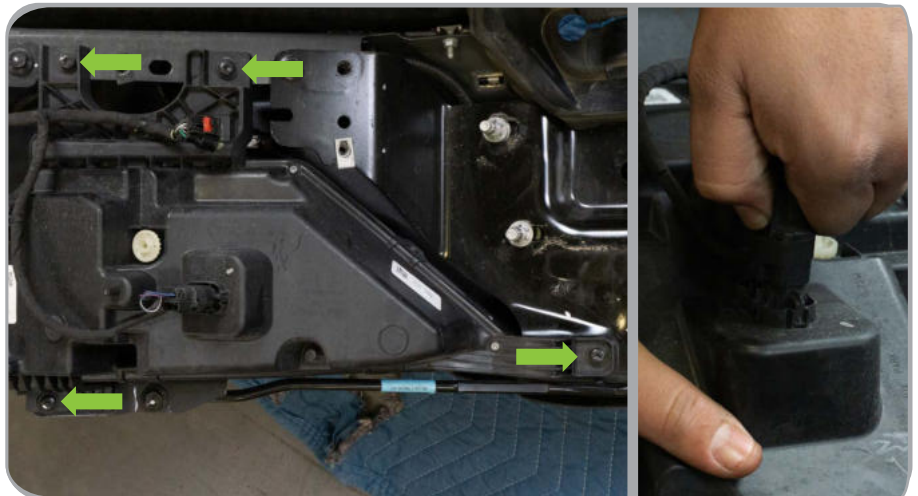


STEP 8 | If your bumper is equipped from the factory with front parking sensors, begin by removing the automatic air dampening system on the factory bumper using a 13mm socket on the three bolts located on each side.



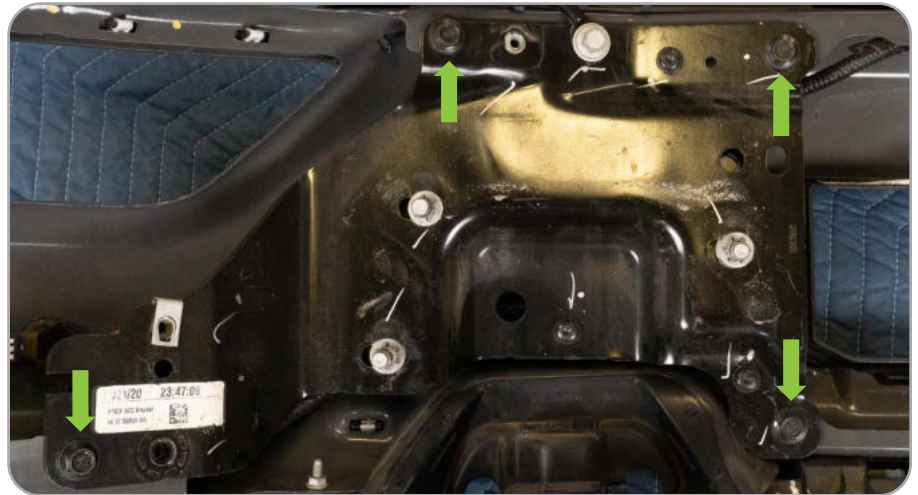
STEP 9 | Using a T30 torx bit, remove the four bolts holding fog light housing on each side of the factory bumper. Unplug the fog lights and set off to the side.

Note: The bumper wire harness has a mount on the fog light. Using your push pin removal tool, remove the harness from each light.



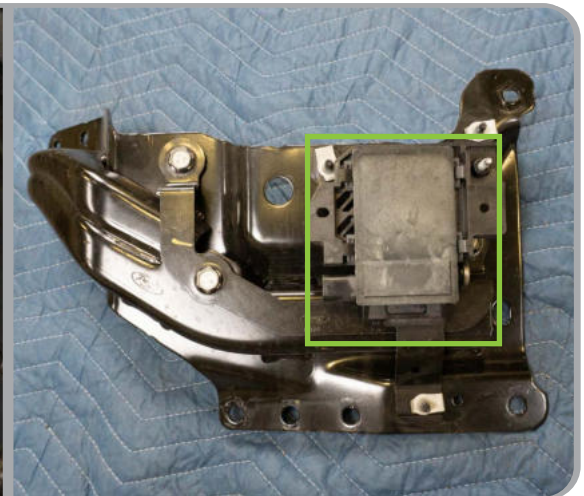
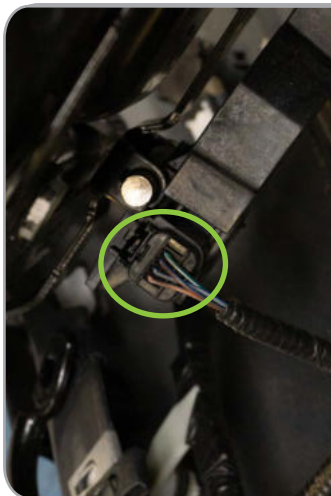
INSTALLATION MANUAL

STEP 10 | Using a 13mm socket, remove the four bolts holding each bumper bracket. Remove brackets and set off to the side.



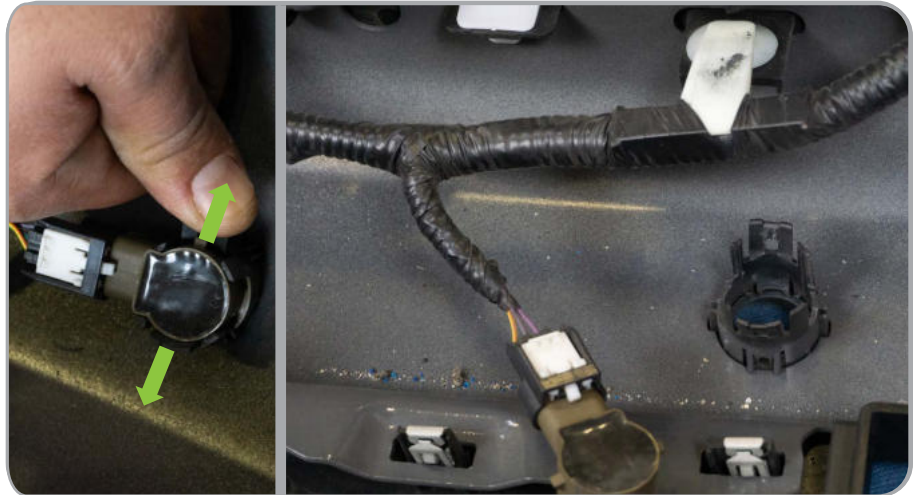
STEP 11 | If you have an adaptive cruise control (ACC) module, unplug this off the driver side bracket and set off to the side since this will not be a part of the bumper install.

NOTE: To relocate the ACC module, you will need the ABFF-01. Use the ABFF-01 instructions for relocation steps before you continue with remainder of bumper install.

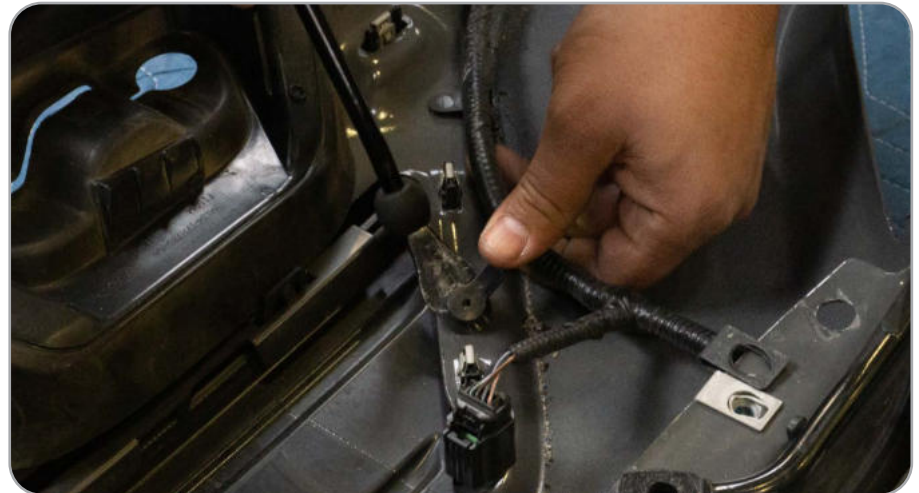


INSTALLATION MANUAL

STEP 12 | After you have full access to the bumper wire harness, unclip each sensor from the bracket by spreading the side of the sensor bezels. Do not overextend these tabs since they can break.



STEP 13 | Using the push pin tool, remove the harness from all points on the factory bumper.



INSTALLATION MANUAL

STEP 14 | To remove the sensor bezels from the bumper, squeeze the side of the bezel from the back and pull the face from the front.

The uninstall of the bumper is complete.



INSTALLATION MANUAL

STEP 15 | With the DV8 front bumper on a protected surface first install the provided foam pieces on to the bumper wing ends as shown.



STEP 16 | Attach each bumper wing using (3) of the provided M12 hardware. Use a 21mm and 22mm wrench to loosely secure the wings in place.

Note: Wings will need to be adjusted once the bumper is mounted on the vehicle to obtain the ultimate fit.



INSTALLATION MANUAL

STEP 17 | If planning to run a winch, install the winch plate at this time. Use (4) of the provided M12 hex bolts and (2) M8 Allen head bolts to secure the winch plate.

Tech Tip: Thread the (4) M12 hex bolts through the bumper, into the winch plate.



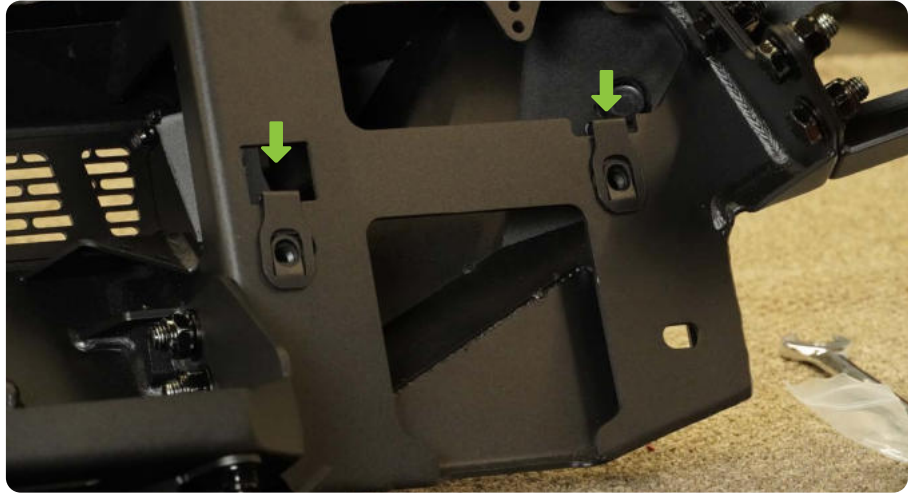
STEP 18 | Use a 21mm socket and 22mm wrench to secure the (4) hex bolts. Use a #6 allen tool and 17mm socket to secure the rear (2) Allen head bolts.

Use (2) flat washers per M12 hex bolt. Use (1) split washer and (2) flat washers per M8 Allen head bolt.



INSTALLATION MANUAL

STEP 19 | Install the provided nut clips as shown on each side of the DV8 bumper.



STEP 20 | If you are planning to run LED Pod lights, install them at this time, using the hardware that is provide with the light.

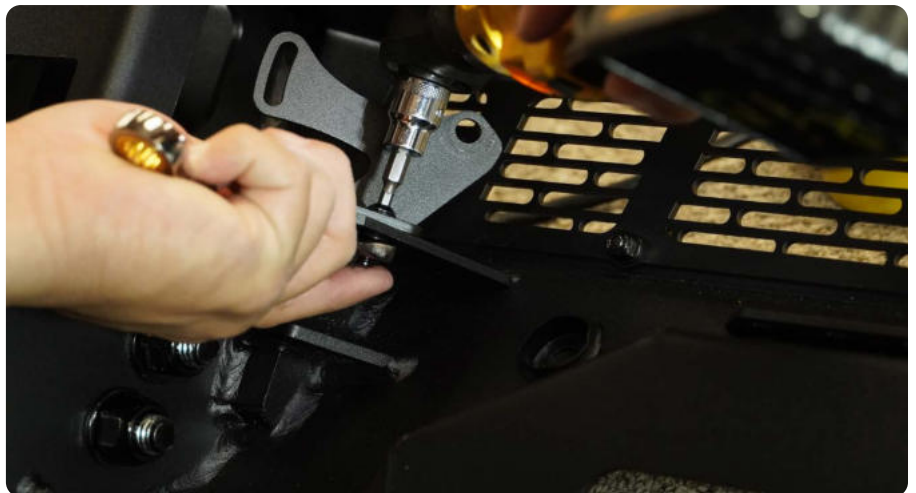
Use the built in zip tie tabs to secure any loose wiring.

Tech tip: Install the inner pod light first.



STEP 21 | If you are planning to run a light bar, install the light bar now.

Loosely Install the provided light bar bracket as shown using the provided M6 hardware, a #4 Allen tool and 10mm wrench.



INSTALLATION MANUAL

STEP 22 | Install the light bar between to the (2) light bar brackets, secure the light bar to the bumper brackets using the hard ware provided with the light.

For this install we chose a DV8 Elite 20" Single row light bar.

Center the light bar and secure the light bracket hardware using a #4 Allen tool and a 10mm wrench.



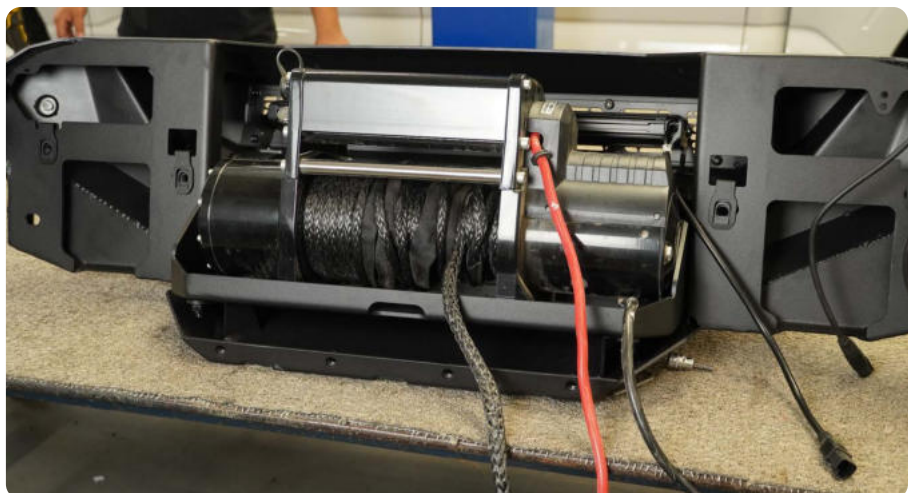
STEP 23 | Install your chosen fair lead at this time using the hardware provided with the fair lead.

For this install we chose a DV8 Pocket Fair lead for Synthetic Rope Winches.



STEP 24 | Install your winch at this time. Secure the winch to the winch plate using the hard that is provided with your chosen winch.

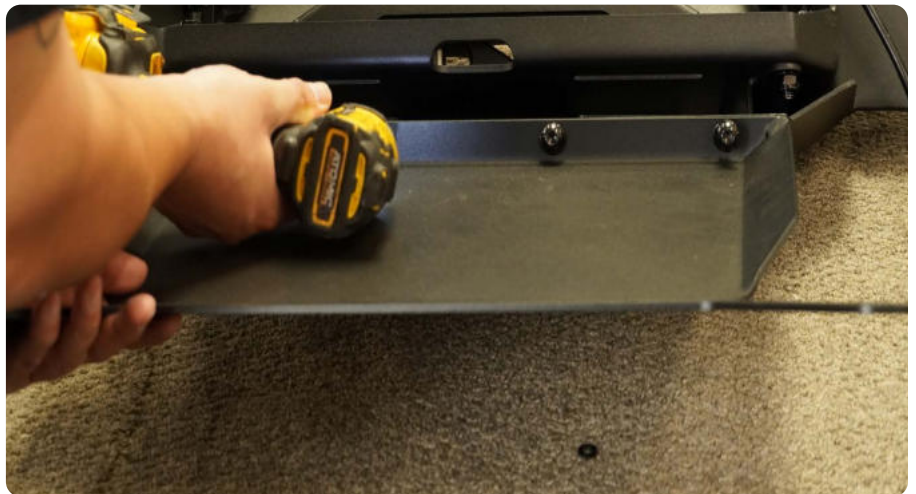
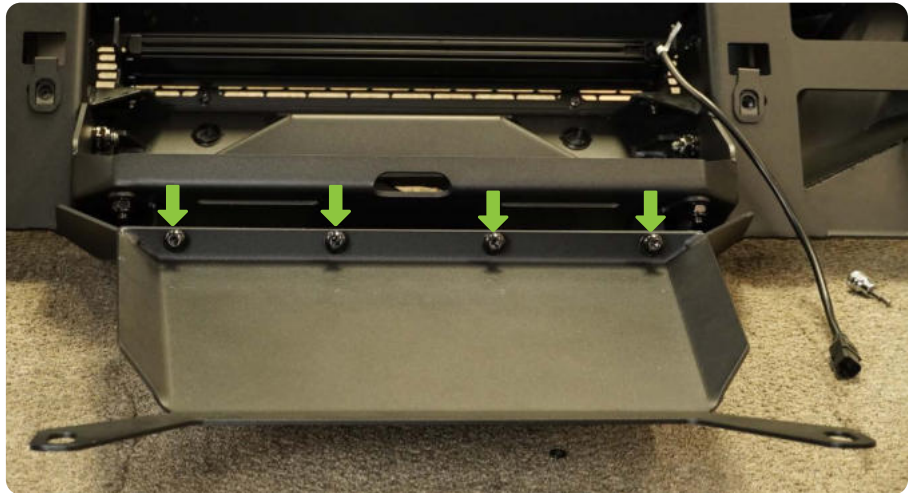
For this install we chose a DV8 12k Synthetic Rope Winch.



INSTALLATION MANUAL

STEP 25 | Loosely Install the skid plate using the (4) provided M8 Allen head bolts and M8 flat washers.

Use a #6 Allen tool to secure the (4) M8 skid plate bolts.



STEP 26 | Moving to the shutter motor removed earlier, start by assembling the installed shutter stops.

Using the long M6 bolt, install the bracket as shown. Slide the bolt through the motor assembly.





STEP 27 | Flip the assembly over and slide the provided gear into the shutter housing.



STEP 28 | Place the top bracket over the assembly and using two M6 bolts, secure rear and top brackets together.





STEP 29 | Lastly, place the gear stop bracket over the gear bolt and secure using a #4 and 10mm socket/wrench.

Note: Tighten the bolt so that the bracket moves with the assembly, but do not over-tighten to prevent damage to the bolt threads or aluminum gear.



INSTALLATION MANUAL

STEP 30 | Take the motor assembly, and using the provided M6 bolt, mount it to the inside of the bumper on the inside of the passenger side.

Secure motor using #4 allen head and 10mm socket/wrench.



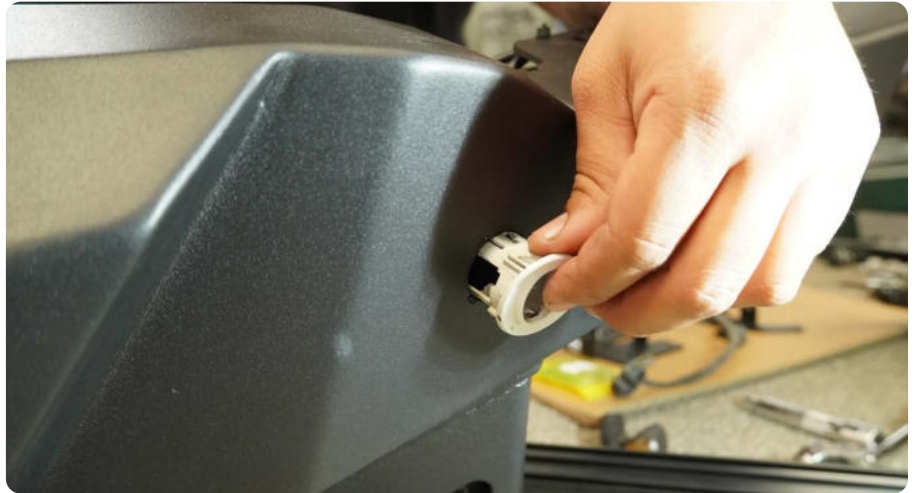
STEP 31 | To install the sensors, take the factory sensor bezels and trim down the tabs on the side of the bezel.

Note: Trim the smallest amount off the ends. This will allow the bezel to “clip” into the bumper correctly with the added thickness of our bumpers compare to factory. Continue to remove small amount each time checking until it snaps in flush.





STEP 32 | Install the bezels from the front in the same spots as factory.



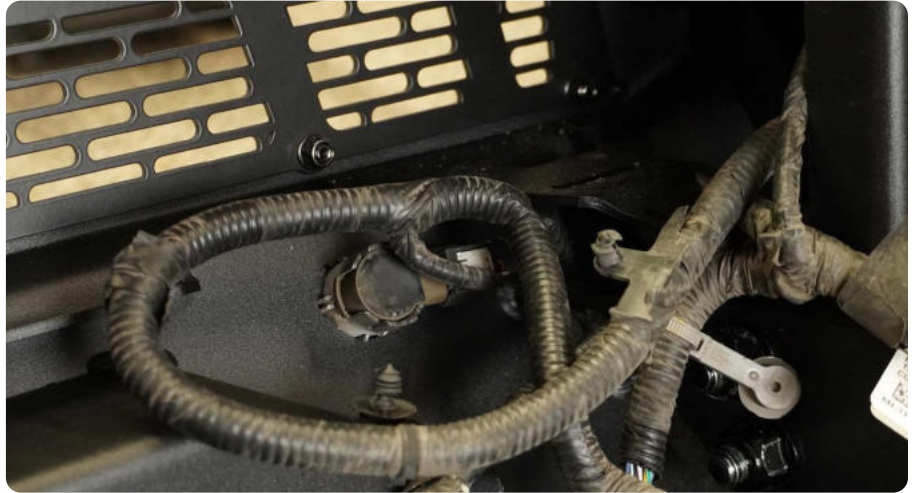
STEP 33 | Start feeding the harness into the bumper. Each sensor plug should land near the bezel placed before.



INSTALLATION MANUAL

STEP 34 | Once harness is in place, plug in all sensors and shutter motor mounted earlier.

Note: Winch was mounted earlier. Removed for images only.



STEP 35 | Use the built in zip tie tabs to secure harness to bumper.



INSTALLATION MANUAL

STEP 36 | Once the bumper is assembled, using a 13mm socket, remove the factory skid plate.



STEP 37 | *POWERBOOST MODELS ONLY*

If equipped with the powerboost, you will need to relocate the factory speaker. Using the factory 8mm bolt on top of the driver side frame, bolt the speaker here as shown.





STEP 38 | With assistance, lift the bumper into place and loosely secure the bumper onto the truck using the M12 hardware supplied.

Secure the skid plate using the factory 13mm bolts.



INSTALLATION MANUAL

STEP 39 | 3.5L EQUIPPED MODELS

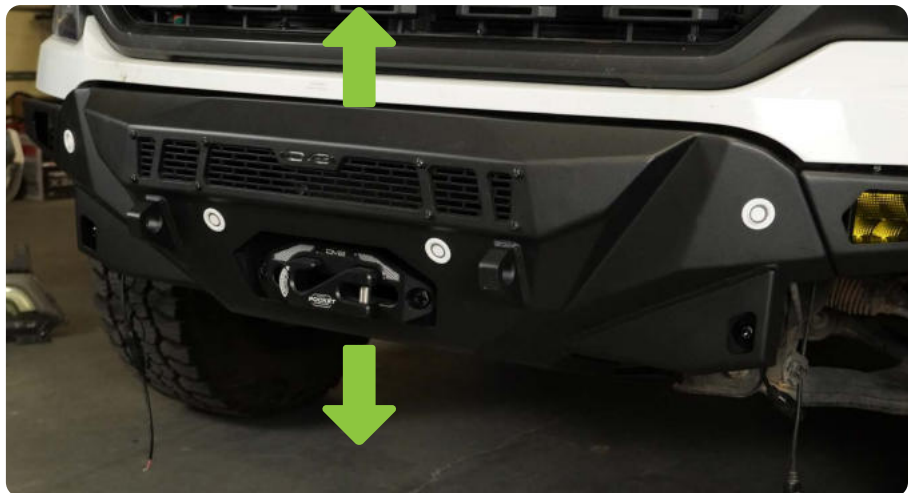
With the bumper and skid plate mounted, you may need to slightly notch the intercooler mount as shown. Mark the mount and then remove the bumper once again. Using a grinder or other similar tool, carefully notch the mount.

Reinstall the bumper.



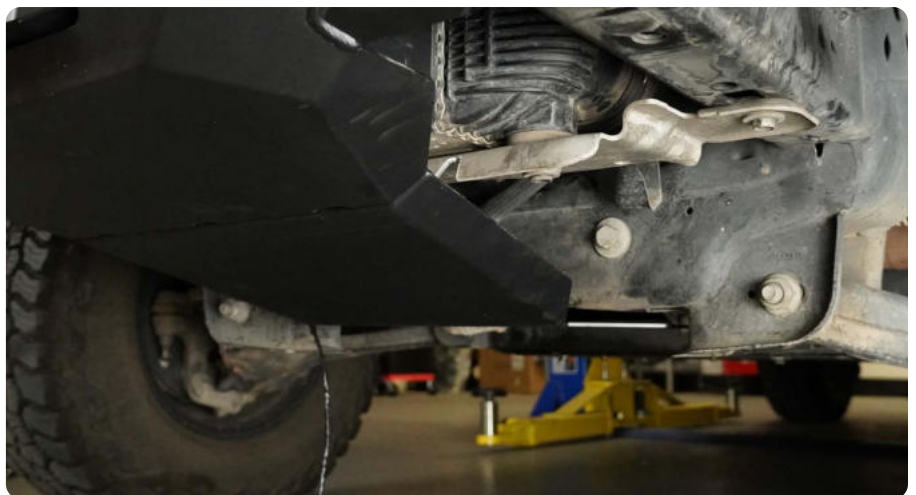
STEP 40 | Adjust bumper side to side/ up and down and using a 18mm socket, secure the 4 bolts (2 per side) on the frame horns.

The the bottom outside corner of each mount, use the provide3d M12 allen head bolt and hardware. Secure using a #8 allen head and 19mm socket.





STEP 41 | Using the 13mm socket, reinstall the rear skid plate over the DV8 skid plate and secure using the factory hardware.

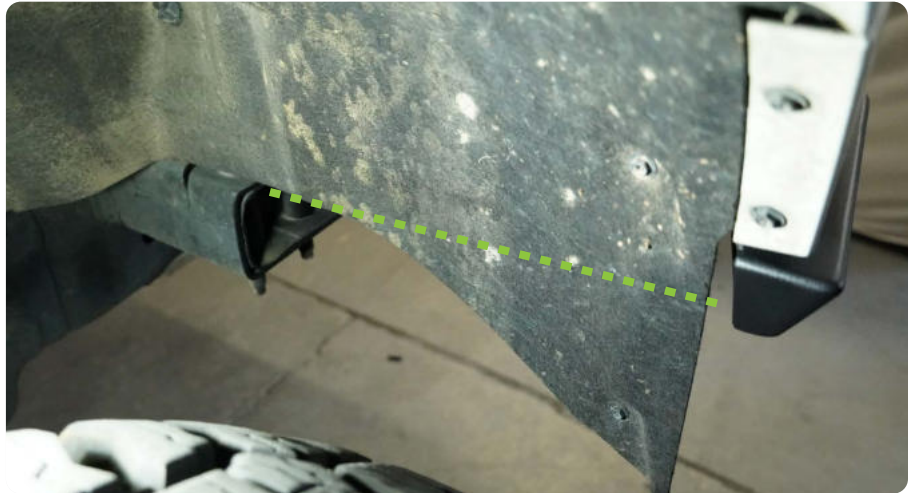


INSTALLATION MANUAL

STEP 42 | With the bumper secure, reconnect the factory wire harness main plug.



STEP 43 | Using a marker or wax pen, mark the inner fender at the middle of the wing. Using a cutting tool, trim the inner fender.



INSTALLATION MANUAL

STEP 44 | Double check all connections and all hardware is secure.

Congratulations, you are completed with the DV8 21-23+ F-150 Spec Front Bumper.

